

# RIVERHOUSE MEMBERSHIP

---

THE RIVERHOUSE IS A HOME FOR PEOPLE WITH PURPOSE  
TO COME TOGETHER TO BE INSPIRED,  
CONNECT, RECHARGE & PLAY.

An aerial photograph of a river scene at dusk or dawn. A bridge with five large circular arches spans the river. Several boats are docked along the right bank. The city skyline is visible in the background under a warm, orange sky.

*Birmingham*  
RIVERHOUSE



EMBRACE YOUR SECOND HOME, WHERE  
CAMARADERIE FLOURISHES, BRILLIANCE  
THRIVES, AND TRANQUILITY REIGNS.



“I joined Bingham Riverhouse as a member more than a year ago, mainly to work in a nice environment few days a week; but Bingham has become so much more. It is now definitely one of my "happy places" - friendly service by the wonderful staff, a beautiful place to work and socialize at, good food and fantastic events all brought together with fine taste.”

- BURAK (MEMBER)

“There is something quintessentially relaxing about being by the river. In the two years I have been a member, I have been fortunate enough to meet likeminded friendly people, attend an array of events from healthy living workshops to whisky and cigar evenings. The setting is serene, the food nutritious and delicious, and the bar will make you whatever cocktail you desire.”

- SUSI (MEMBER)



BE TOGETHER

BE BRILLIANT

BE WELL

A place to do. Meet. Get your head down, or lift your spirits up. Work home-from-home in a place that gives you the space you need to be at your best and make things happen.

---

We have a variety of beautiful spaces available for you to enjoy throughout the house - with our Garden Rooms and Garden (including our Garden Pods for members to enjoy from Monday to Thursday).

---

Somewhere you know you'll be able to reconnect, switch off the things that don't matter, turn on the things that do.

Rest and reconnection shouldn't be productivity's enemy but it's partner, which is why we've brought it all together.

# MEMBERSHIP

OUR HOUSE MEMBERSHIP GIVES YOU A HOME AWAY FROM HOME. FOSTERING CONNECTIONS, COMMUNITY & WELLNESS.

---

## Riverhouse Membership Includes:

- Space to meet, work and create
- Complimentary access to all House Happenings - plus 1 guest
- Members rates on workshops & courses
- Unlimited Wellbeing classes
- Access to private Zoom Room\*  
(Available Mon - Fri for 2 hours per day)
- Complimentary parking\*
- Access to Members' Room  
(Member's Only Mon - Fri, 7am - 5:30pm)
- Continental Breakfast  
(Available Mon - Fri, 7am - 10am)
- Complimentary dome hire for meetings\*
- Complimentary 1 night stay after 6 months of membership
- Lunch or dinner for 2 in the Riverhouse Restaurant\*
- Private bookable meeting rooms at £50 per hour\*
- 12 guest passes annually
- 20% off bedroom rates for you, your family & friends
- 15% off food & drink in the Members' Drawing Room & Riverhouse Restaurant
- 10% off private event room hire
- 15% off treatments

Plus many other perks and discounts throughout the house...

---

## PRICING

**Full Access:** £1500 Annual | £150 Monthly | £108 Joining Fee

**Without Well-being Classes:** £950.00 Annual | £95 Monthly | £108 Joining Fee

**Corporate:** Join as a group from the same business and enjoy all the perks of our membership with tiered pricing - meaning you save based on the more members that join.

**30% Discount for Under 30's**

*\*Terms & Conditions Apply | Parking is available on a first come, first-served basis*





## A HOME FOR ENTREPRENEURS

For entrepreneurs looking to explore growth opportunities at any stage of their business journey. Discover exclusive business pitch events and participate in our curated workshops to connect, learn and thrive.

# bhuti

## WELLNESS

bhuti is an antidote to the modern stressful lifestyle founded in 2016, our mission is to help you to come home to your true nature.

We offer a range of yoga styles, meditation and wellbeing workshops, available in-person and online - as well as hi-tech organic body treatments, specialised facials and alternative therapies.





BINGHAM RIVERHOUSE

## FOOD & DRINK

### RIVERHOUSE MEMBERS' MENU

Our Riverhouse Members' Menu includes light bites, nutritious lunch and dinner options as well as refined interpretations of classic bar snacks.

### RIVERHOUSE RESTAURANT

Feel good, modern comfort food with a laid back vibe. Menus by award winning chef Vanessa Marx featuring consciously sourced produce and ingredients foraged in harmony with the seasons and local environment.

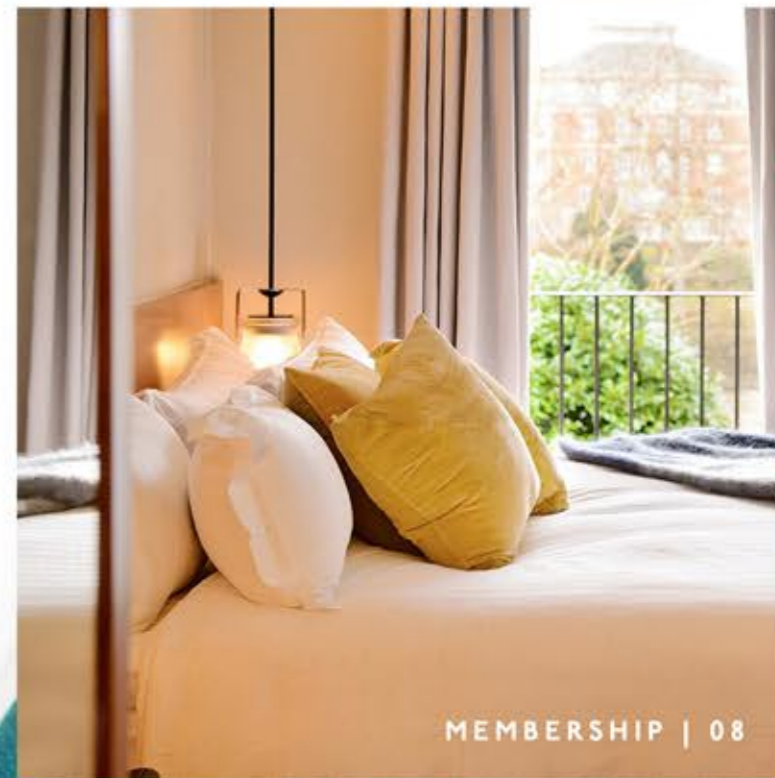
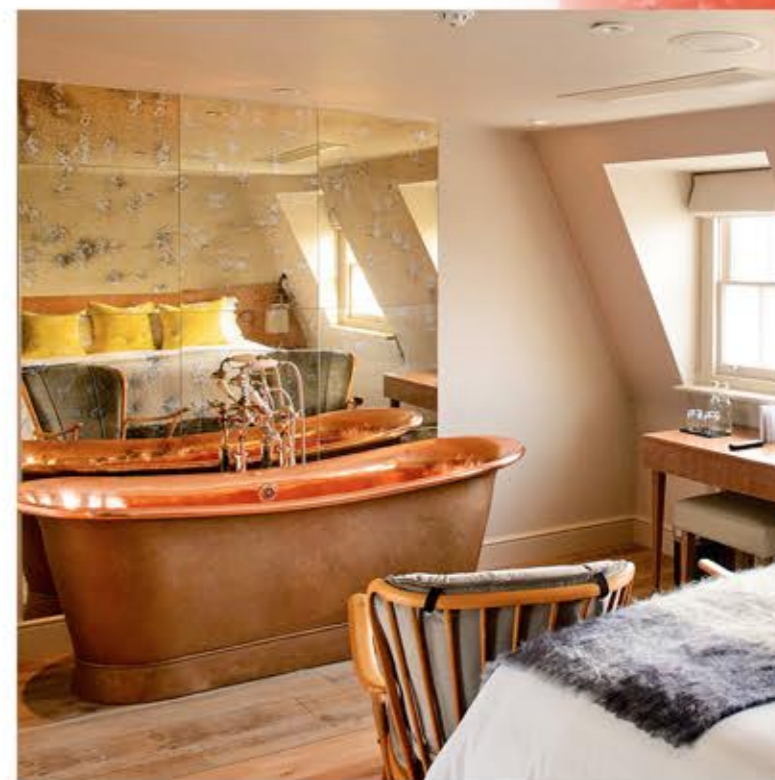
Members enjoy a 15% discount on their total food & drink bill.

---

## STAYS

Our fourteen bedrooms, combine calm, comfort and modern craftsmanship.

Members enjoy a 20% discount bedroom stays.



MEMBERSHIP | 08



*Bingham*

RIVERHOUSE

bhuti

020 8940 0902

[BinghamRiverhouse.com](http://BinghamRiverhouse.com)

[@BinghamRiverhouse](https://www.instagram.com/BinghamRiverhouse)

---

61-63 Petersham Rd,  
Richmond, London, TW10 6UT  
20 minutes to Central London | 20 minutes to Heathrow

**Certified**



---

**Corporation**