

## Membership

-

'Your House - Where you belong'





We are all many different things.

Sometimes we are world-beaters, game-changers, grafters or daydreamers.

Sometimes we need to achieve, to build, to do.

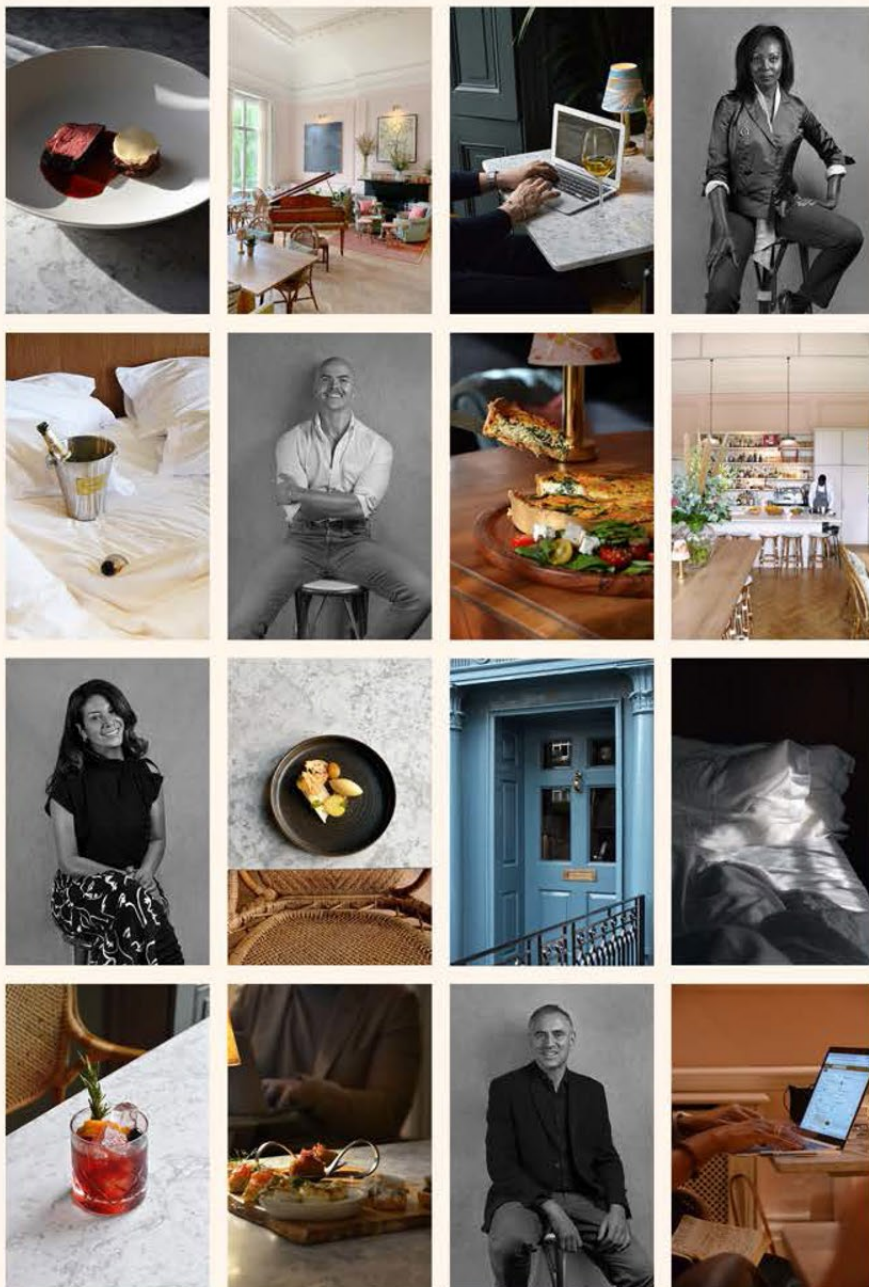
Sometimes we are a soloist craving its choir and need to harmonise, to belong.

Sometimes we are restless and need help settling.

In the course of a day, an hour, a minute we can be all of these things and more.

We have made a place where they're not kept apart, but flow together.

So that we can bring together those who understand.



## Be Together

The member's drawing room – a centre point for you to gather around and galvanise from.

A hub to build new connections, dine together on a fresh seasonal menu, and party into the wee small hours...



## Be Brilliant

-

A place to do. Meet. Get your head down, or lift your spirits up.

Work home-from-home in a place that gives you the space you need to be at your best and make things happen.



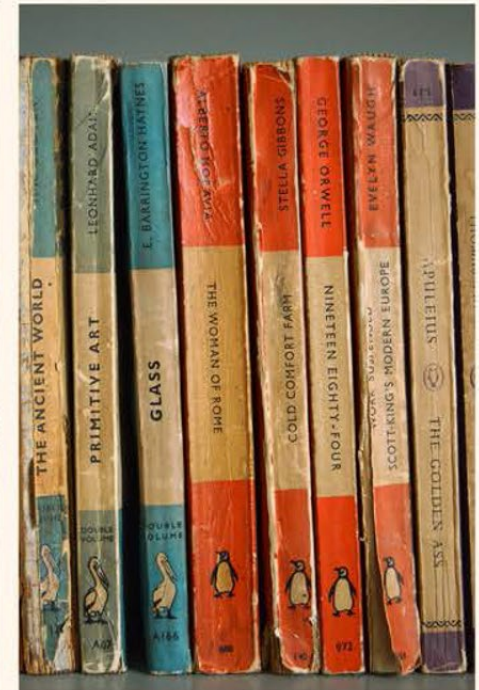


## Be Still

-

Somewhere you know you'll be able to reconnect, switch off the things that don't matter, turn on the things that do.

Rest and reconnection shouldn't be productivity's enemy but it's partner, which is why we've brought it all together.





## Membership

-

**FLOW MEMBERSHIP** allows you to flow in and out of both bhuti and the Riverhouse giving you a home from home; use of the workspace; priority reservations at Steven Edwards and at bhuti classes, special rates on bedrooms, events hire, treatments and in the vegan cafe; a members-only relaxation lounge and use of the weights room.

**RIVERHOUSE MEMBERSHIP** is the house only membership, giving you a home from home; use of the workspace; priority reservations at Steven Edwards, special rates on bedrooms and events hire and a taste of classes available at bhuti.

**OFFICE MEMBERSHIP** gives you the full perks of the Riverhouse membership for three people within the same company plus a complimentary half day private meeting room for up to 10 people per month (subject to availability). Extra team members can be added at £850.00 per person.

**BHUTI MEMBERSHIP** includes unlimited classes, special rates on treatments and in the vegan cafe; a members-only relaxation lounge and use of the weights room.

	FLOW MEMBERSHIP	RIVERHOUSE MEMBERSHIP	BHUTI MEMBERHSIP	JOINING FEE
Access to Riverhouse Drawing Room	✓	✓		
Discount on Bedrooms and Event Hire	✓	✓		
Member-exclusive Events	✓	✓		
Workspace	✓	✓		
Priority Reservations @ Steven Edwards	✓	✓		
Introductory PT session	✓	✓	✓	
Bhuti Classes	Unlimited	Two per month	Unlimited	
Bhuti Treatments Discount - up to 15%	✓		✓	
Bhuti Cafe Discount - 15%	✓		✓	
Relaxation Lounge	✓		✓	
Weights Room	✓		✓	
Half-day Private Meeting Room - per month				
Annual Membership	£2,500	£850		£180
Annual Office Membership	£7,050	£2,400		£540
Monthly Membership	£228	£91		£180
Couples Annual Membership	£5,000	£1,700		£180
Online Membership only	n/a	n/a		£0
Birthday Treat	✓			



“It’s a dream come true to create a place which responds to the needs of our neighbourhood, offering a sense of belonging and a second home for people to get together, work, evolve, and play in”.  
Founder, Samantha Trinder

#### **bhuti foundation**

A percentage of profits and joining fees are donated to the bhuti foundation which actively supports local people in need to be together, brilliant and calm.

#### **Get in touch**

-

[membership@binghamriverhouse.com](mailto:membership@binghamriverhouse.com)

#### **Apply online**

-

[binghamriverhouse.com/members](http://binghamriverhouse.com/members)

